

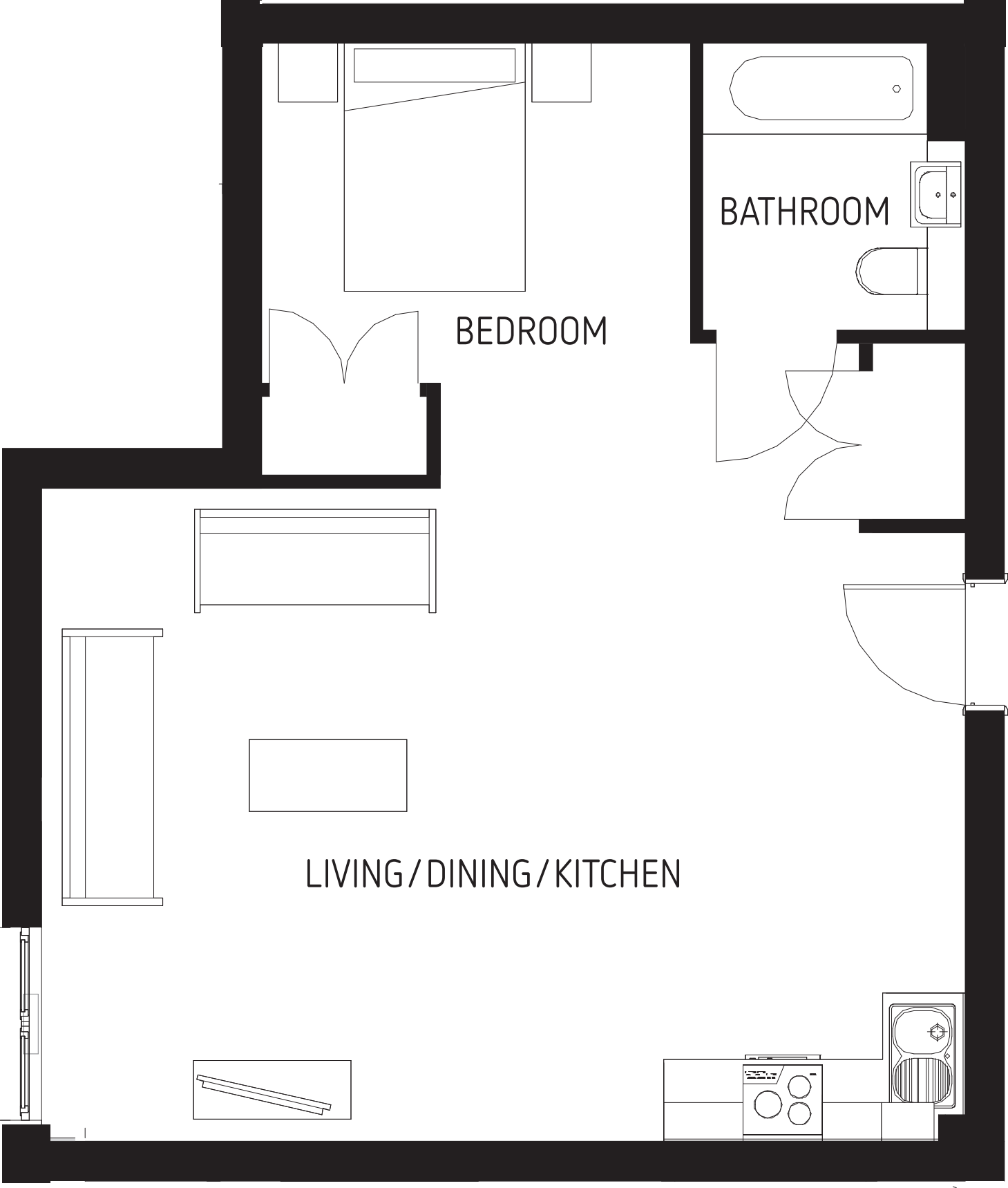
A floor plan of a small apartment. The layout includes a Bedroom at the top left, a Living/Dining area in the center, and a Kitchen/Bathroom area at the bottom. The Kitchen/Bathroom area is divided into two sections. The top section of this area is the Bathroom, which contains a toilet, a bathtub, and a window. The bottom section is the Kitchen, which contains a sink and a stove. The Living/Dining area is the largest room and contains a fireplace, a tall cabinet, and a window. The Bedroom contains a bed and a window. The Kitchen/Bathroom area is separated from the Living/Dining area by a wall. The Bathroom is separated from the Kitchen by a wall. The Kitchen/Bathroom area is separated from the Living/Dining area by a wall. The Kitchen/Bathroom area is separated from the Living/Dining area by a wall.

BEDROOM

LIVING/DINING

BATHROOM

KITCHEN



BEDROOM

BATHROOM

LIVING/DINING/KITCHEN